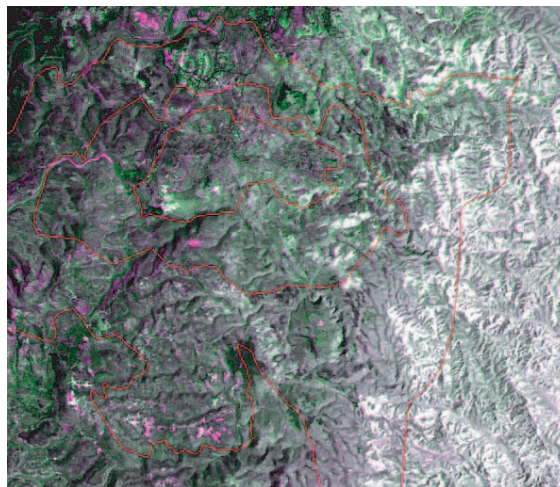


Distinguished
SEMINAR
Series

Estimation of the Impact of Land-use Change and Urbanization on Climate

Eugenia Kalnay, Hong Li and Ming Cai

We proposed a simple approach for the estimation of the impact of land-use changes on climate change: taking the difference between the trends in the surface observations and in the NCEP-NCAR 55 year Reanalysis, which does not include surface observations or changes in the surface properties (Kalnay and Cai, *Nature*,



2003, http://www.atmos.umd.edu/~ekalnay/Kalnay_01675_final.pdf).

We have now extended this in several ways, including the seasonal dependence of the trends.

WEDNESDAY, SEPT. 22, 2004

12:00 PM

CEE CONFERENCE ROOM (EGR 1179)

